

Modular Plugs -Unshielded



R1001-4P4C	4 positions, 4 contacts
R1001-6P4C	6 positions, 4 contacts
R1001-6P6C	6 positions, 6 contacts

Category-3

R1001-8P8C	8 positions, 8 contacts (Flat Cable)
R1001-8P8CR	8 positions, 8 contacts (Stranded Round Cable)
R1001-8P8CSR	8 positions, 8 contacts (Stranded Solid Round Cable)
R1001-10P10C	10 positions, 10 contacts (Flat Cable)

Category-5E

R1001-8P8C-C5E	8 positions, 8 contacts (Flat Cable)
R1001-8P8CR-C5E	8 positions, 8 contacts (Stranded Round cable)

Category-6

R1001-8P8CR-C6I	8 positions, 8 contacts (Stranded Round cable)
-----------------	--

FEATURES:

- Insulation pierce contact method
- 50µ" & 6µ" gold contact options
- Pre-inserted contacts

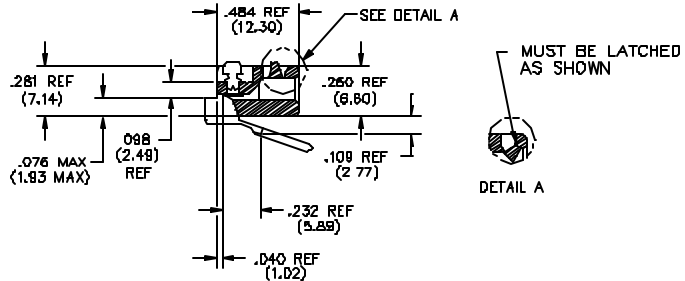
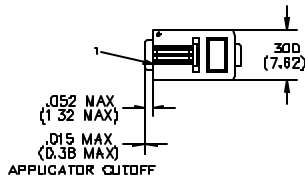
MATERIAL

- Contact: Phosphor bronze
- Housing: UL94V-0 / PBT glass filled

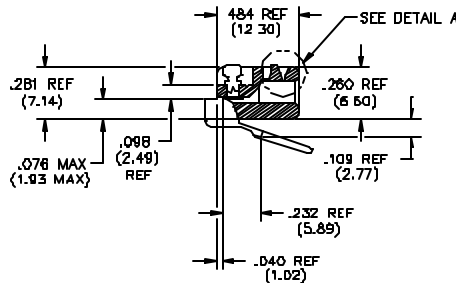
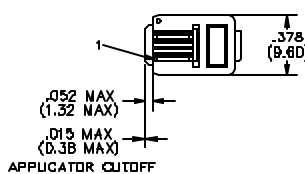
ELECTRICAL:

- Current rating: 2 AMP maximum
- Contact resistance: 20 milliohms maximum
- Insulation resistance: 500 Megohms minimum
- Dielectric withstanding voltage: 500 VAC
- Operating temperature: -40°C to +105°C

4 CIRCUIT HANDSET CORD PLUG
1001-4P4C



6 CIRCUIT LINE CORD PLUG
1001-6P4C
1001-6P6C



8 CIRCUIT PLUG
1001-8P8C

