

4051A-60	4051B-60
4051A-80	4051B-80

Type A	Type B
Closed top style	Open top style

Height: **-60 = 6.0 mm**
-80 = 8.0 mm

FEATURES:

- Mates with Regal 4070, 4071, 4072 & 4073 series
- Dual tuning fork contact for high reliability
- Fully stackable side to side or end to end

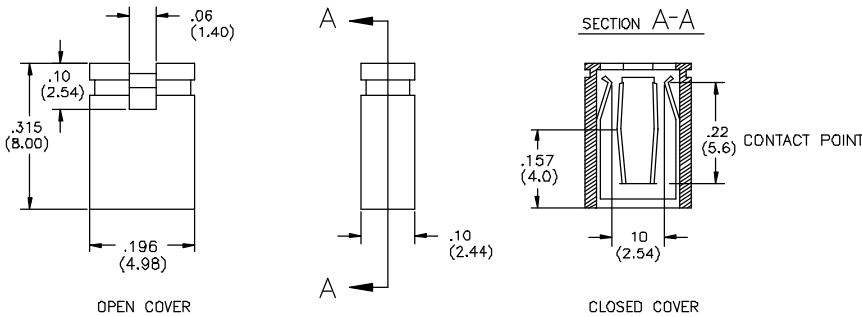
ELECTRICAL:

- Current rating: 3 AMP maximum
- Contact resistance: 20 milliohms maximum
- Insulation resistance: 100 Megohms minimum
- Withstanding voltage: 300 VDC

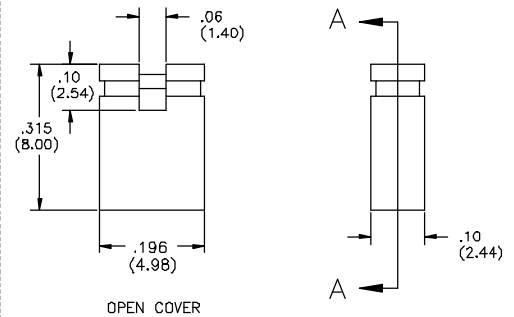
MATERIAL:

- Insulator: UL94V-0 / PBT glass filled
- Contacts: Phosphor bronze
- Plating: 6u" gold over nickel
- Operating temperature: -55°C to +105°C
- Color: Black

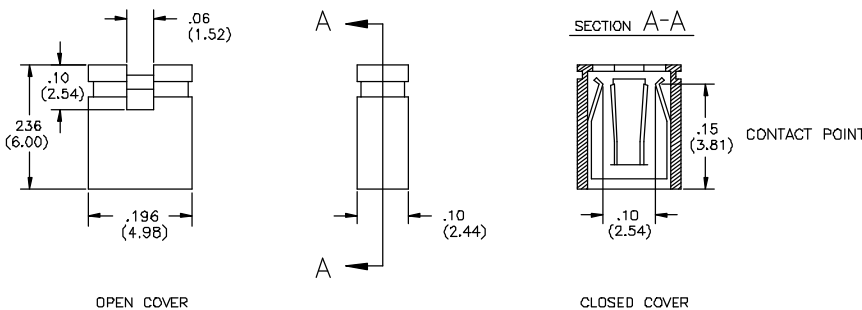
4051A-80



4051B-80



4051A-60



4051B-60

