

| | | |
|---------------------------------|-------------------------------------|-----------------------|
| Standard .100" pitch | | |
| 4070-SH-40 (Straight) | 4072-SHR-40 (Right angle) | Single row / 40 - pin |
| 4071-DH-80 (Straight) | 4073-DHR-80 (Right angle) | Double row / 80 - pin |

MATERIAL:

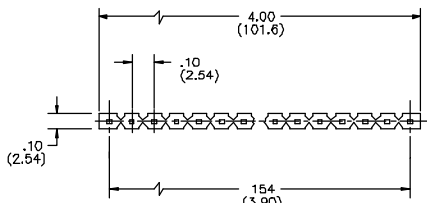
- Insulator: UL94V-0 / PBT glass filled
- Color: Black
- Operating temperature: -55°C to +105°C
- Contacts: Brass
- Plating: 6µ" gold over nickel

FEATURES:

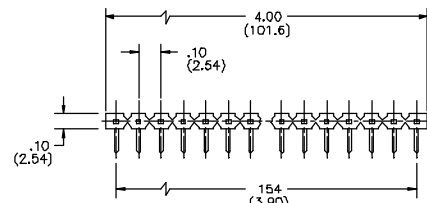
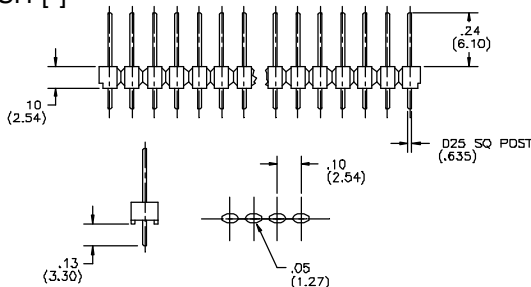
- Single or double row styles
- Low cost interconnect system
- Notched side for ease of breaking into required sizes
- Cut sizes stocked at Regal distributors

ELECTRICAL:

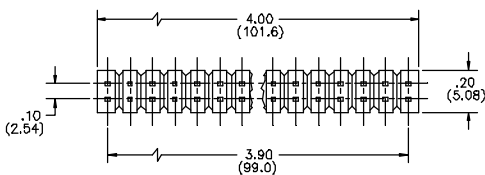
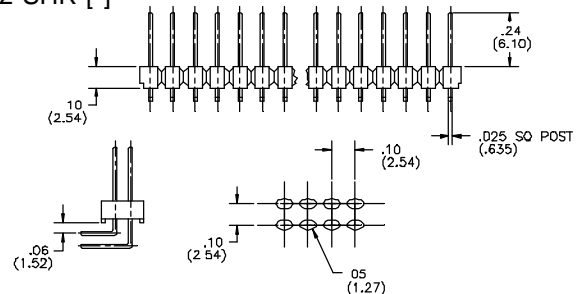
- Current rating: 3 AMP maximum
- Contact resistance: 10 milliohms maximum
- Insulation resistance 1000 Megohms minimum
- Dielectric withstanding voltage: 1000 VAC



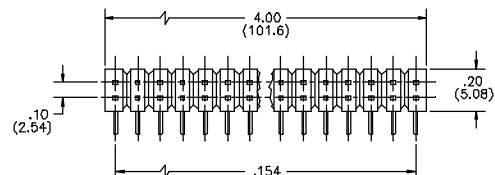
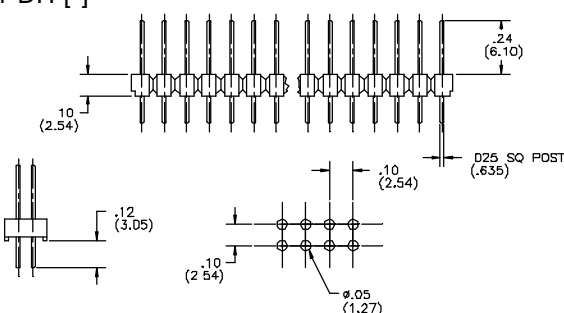
4070-SH-[*]



4072-SHR-[*]



4071-DH-[*]



4073-DHR-[*]

