



4033-[*][**]

*Number of contacts;
Options are: **20, 28, 32, 44, 52, 68, 84**

**For Surface mount add
SMT after part number
(e. g. **4033-68SMT**)



FEATURE:

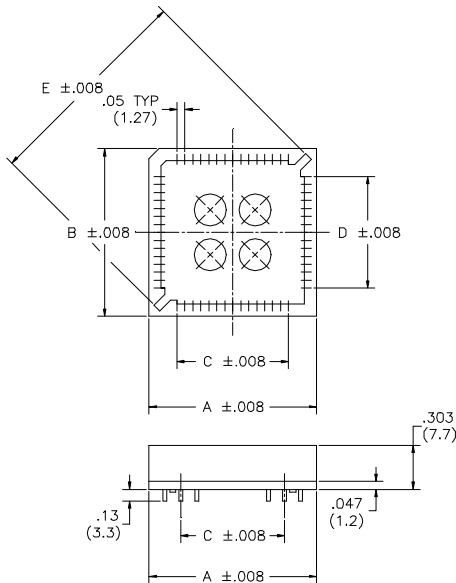
- Auto-insertion machine compatible
- Standoffs and open center allow for easy cleaning
- Anti-wicking contact design
- Polarized for chip orientation
- High temp design surface mount

ELECTRICAL:

- Current rating: 1 AMP Maximum
- Contact resistance: 30 milliohms Maximum
- Insulation resistance: 1000 Megohms minimum
- Dielectric withstanding voltage: AC 500 VAC

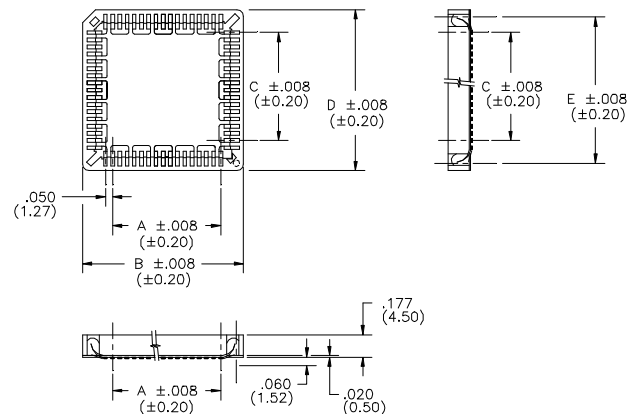
MATERIAL:

- Insulator: UL94V-0 / PBT glass filled (Through hole)
- Insulator: UL94V-0 / PPS glass filled (Surface mount)
- Contacts: Phosphor bronze
- Plating: Tin plate
- Operating temperature: -55°C - to +105°C (Through hole)
- Operating temperature: -55°C - to +125°C (Surface mount)



Through hole

NO. OF CONTACTS	A	B	C	D	E
20	.610 (15.50)	.610 (15.50)	.200 (5.08)	.200 (5.08)	.657 (16.70)
28	.708 (18.00)	.708 (18.00)	.300 (7.62)	.300 (7.62)	.802 (20.38)
32	.810 (20.58)	.810 (20.58)	.300 (7.62)	.300 (7.62)	.880 (22.34)
44	.928 (23.58)	.928 (23.58)	.500 (12.70)	.500 (12.70)	1.08 (27.60)
52	1.020 (25.90)	1.020 (25.90)	.600 (15.24)	.600 (15.24)	1.24 (31.40)
68	1.25 (31.80)	1.25 (31.80)	.800 (20.32)	.800 (20.32)	1.51 (38.34)
84	1.44 (36.70)	1.44 (36.70)	1.000 (25.40)	1.000 (25.40)	1.80 (45.60)



Surface mount

NO. OF CONTACTS	A	B	C	D	E
20	.200 (5.08)	.615 (15.64)	.200 (5.08)	.615 (15.64)	.500 (12.72)
28	.300 (7.62)	.720 (18.28)	.300 (7.62)	.720 (18.28)	.600 (15.27)
32	.300 (7.62)	.820 (20.82)	.300 (7.62)	.820 (20.82)	.700 (17.80)
44	.500 (12.70)	.917 (23.28)	.500 (12.70)	.917 (23.28)	.800 (20.32)
52	.600 (15.24)	1.017 (25.84)	.600 (15.24)	1.017 (25.84)	.901 (22.90)
68	.800 (20.32)	1.218 (30.94)	.800 (20.32)	1.218 (30.94)	1.100 (27.94)
84	1.000 (25.40)	1.419 (36.04)	1.000 (25.40)	1.419 (36.04)	1.30 (33.06)

030722