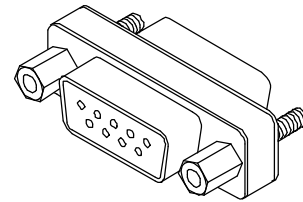
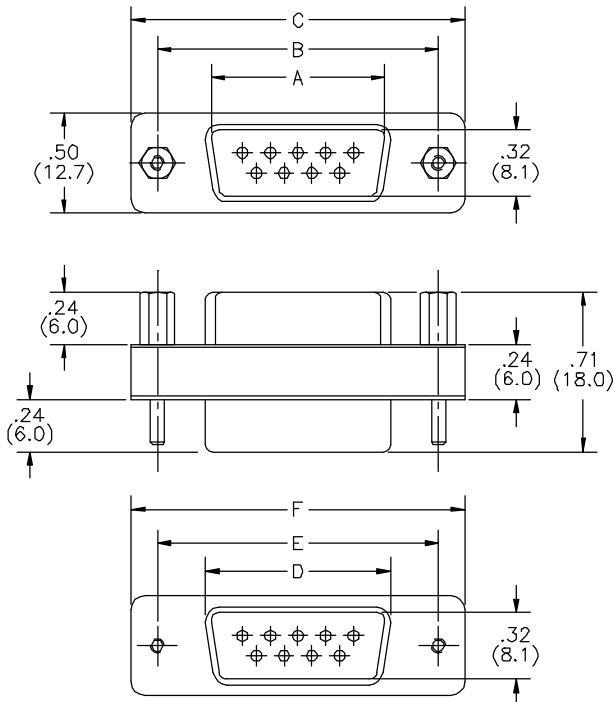


- 7601-09-[*]** 9 - Position
- 7602-15-[*]** 15 - Position
- 7603-25-[*]** 25 - Position
- 7604-37-[*]** 37 - Position
- 7609-15-[*]** 15 - Position, high density

*Gender;
MM - Male to male
FF - Female to female
MF - Male to female
FM - Female to male

FEATURES:

- Multiple options to choose from
- Connector saver on equipment
- Cable saver
- Low cost / easy to use



ITEM	A	B	C
-9 M	.67(16.9)	.98(25.0)	1.23(31.2)
-15 M	1.00(25.3)	1.31(33.3)	1.55(39.3)
-25 M	1.54(39.0)	1.85(47.0)	2.10(53.3)
-37 M	2.18(55.4)	2.50(63.5)	2.74(69.5)
ITEM	D	E	F
-9 F	.64(16.3)	.98(25.0)	1.23(31.2)
-15 F	.99(24.6)	1.31(33.3)	1.55(39.3)
-25 F	1.51(38.3)	1.85(47.0)	2.10(53.3)
-37 F	2.16(54.8)	2.50(63.5)	2.74(69.5)