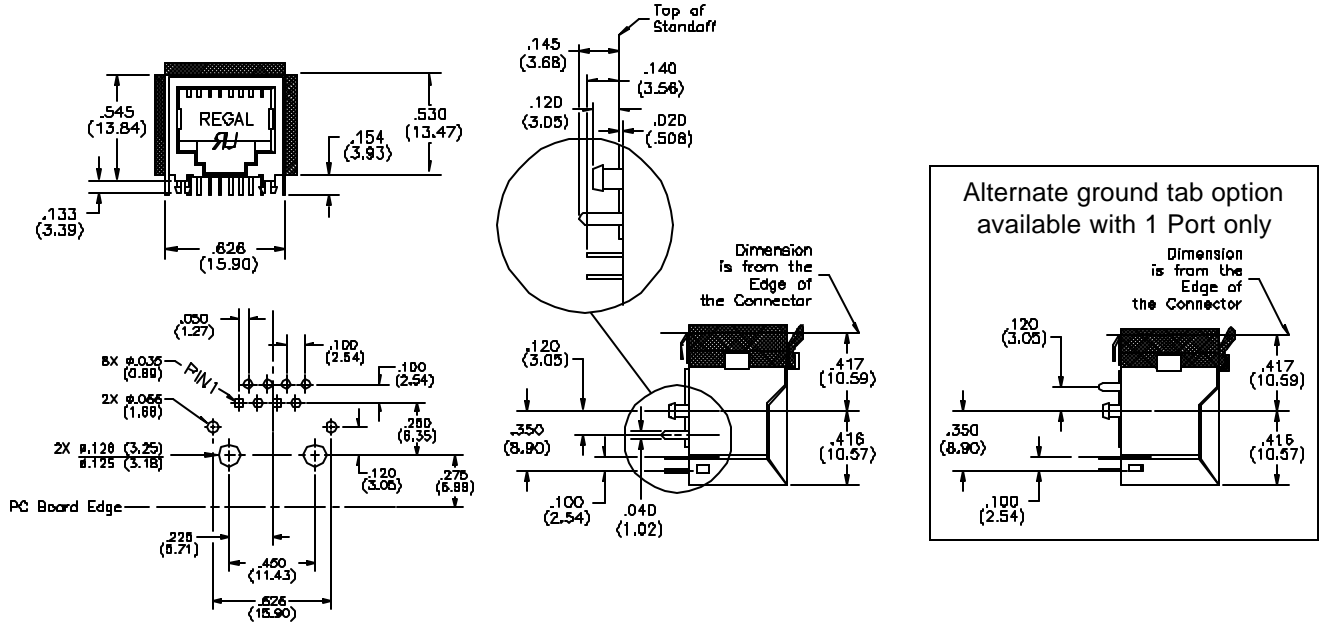
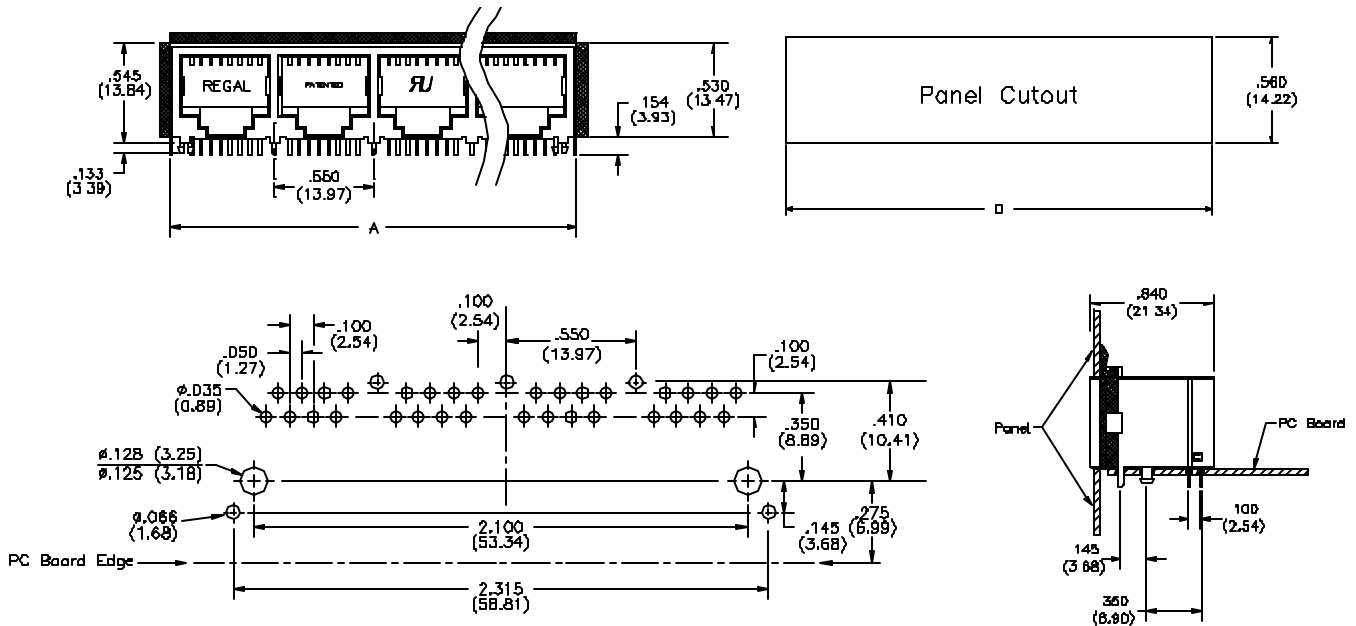


1-Port (PCB ground tabs)



4-Port - 8-Port (Front PCB ground tabs)



PC Board Layout Component Side

Number of Ports	A	B	C	D
1	.635 (16.13)	.625 (15.88)	.450 (11.43)	.645 (16.38)
2	1.235 (31.37)	1.215 (30.87)	1.00 (25.40)	1.245 (34.16)
4	2.335 (59.31)	2.315 (58.81)	2.10 (53.34)	2.345 (59.56)
6	3.435 (87.25)	3.415 (86.75)	3.20 (81.28)	3.445 (87.50)
8	4.535 (115.19)	4.515 (114.68)	4.30 (109.22)	4.545 (115.44)

030722