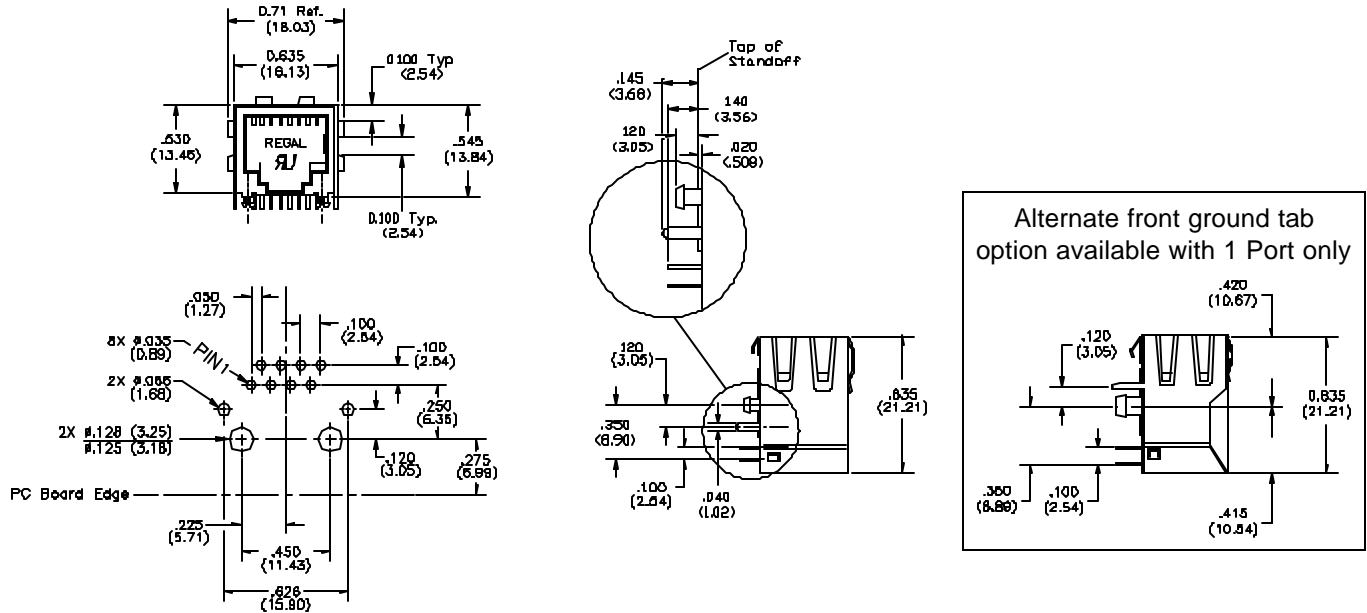
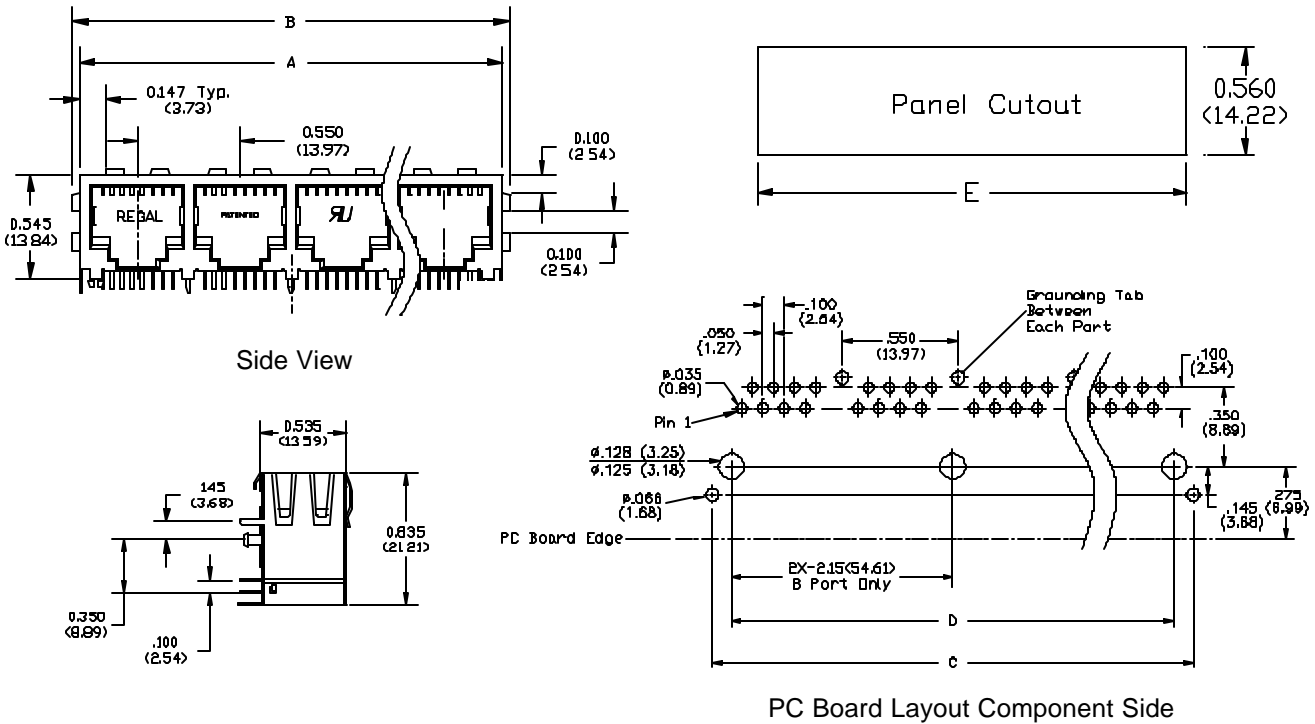


# High Performance RJ45 Jacks Shielded With Tabs

## 1-Port (Rear PCB ground tabs)



## 4-Port - 8-Port (Front PCB ground tabs)



Number of Ports	A	B	C	D	E
1	.635 (16.13)	0.71 (18.03)	.625 (15.88)	.450 (11.43)	.656 (16.66)
2	1.235 (31.37)	1.3 (33.02)	1.215 (30.86)	1.00 (25.4)	1.262 (32.05)
4	2.335 (59.31)	2.4 (60.96)	2.315 (58.80)	2.10 (53.34)	2.362 (59.99)
6	3.435 (87.25)	3.5 (88.9)	3.415 (86.74)	3.200 (81.28)	3.462 (87.93)
8	4.535 (115.19)	4.6 (116.84)	4.517 (114.73)	4.300 (109.22)	4.562 (115.87)

030722